

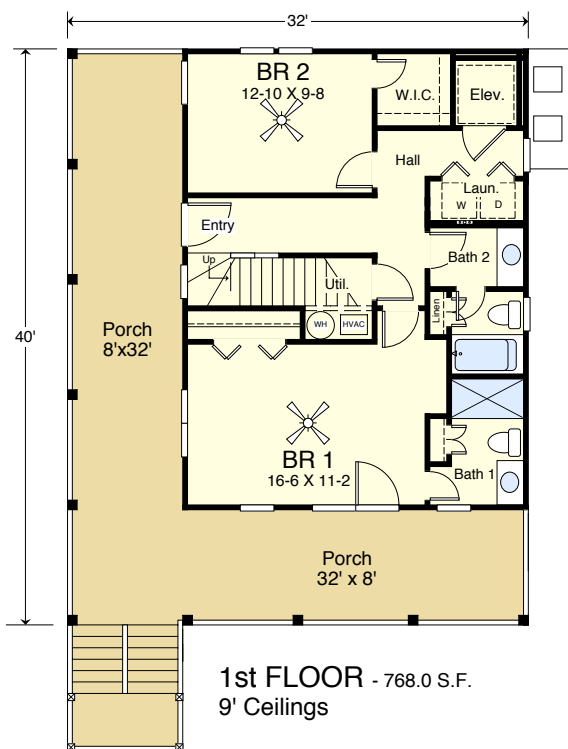
SURFSIDE 1536-3E



LEFT SIDE



FRONT



**COASTAL
DESIGNS**

cottages for coastal living

www.coastaldesigns.com
PO Box 379 · Wrightsville Beach · NC · 28480 ·
910-616-6905

Copyright © 2005-2019, Coastal Designs

This plan depicts a sketch plan, designer reserves the right to make changes and modifications for improvements. Measurements and dimensions are approximate.

SURFSIDE 1536-3E

1,536 square feet living area, Elevator
3 bedrooms, 3 baths

32'-0" wide x 48'-8" deep x 35'-0" high
Living Areas:

First Floor	=	768.0 S.F.
Second Floor	=	768.0 S.F.
Total	=	1,536.0 S.F.
Porches	=	1,024.0 S.F.

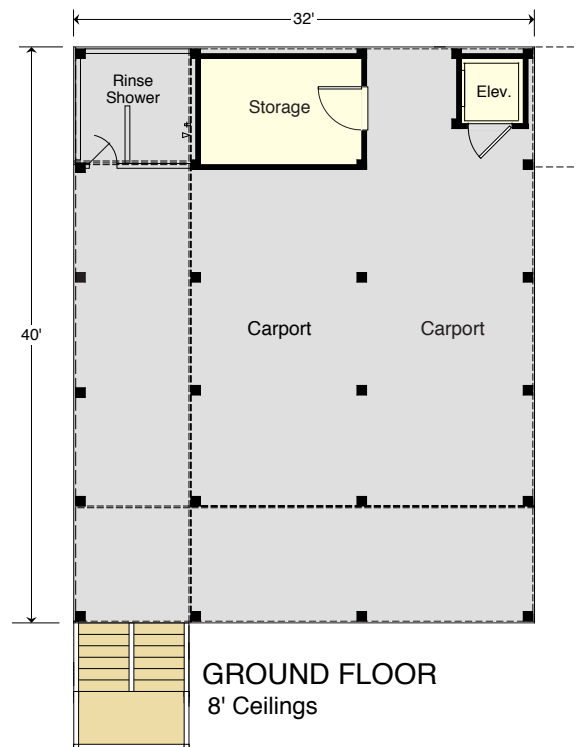
SURFSIDE 1536-3E



REAR



RIGHT SIDE



**COASTAL
DESIGNS**

cottages for coastal living

www.coastaldesigns.com

PO Box 379 · Wrightsville Beach · NC · 28480 ·

910-616-6905

Copyright © 2005-2019, Coastal Designs

This plan depicts a sketch plan, designer reserves the right to make changes and modifications for improvements. Measurements and dimensions are approximate.

SURFSIDE 1536-3E

1,536 square feet living area, Elevator
3 bedrooms, 3 baths

32'-0" wide x 48'-8" deep x 35'-0" high

Living Areas:

First Floor = 768.0 S.F.

Second Floor = 768.0 S.F.

Total = 1,536.0 S.F.

Porches = 1,024.0 S.F.